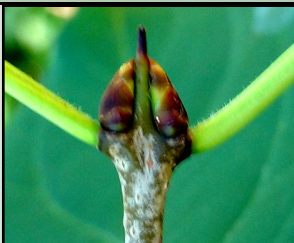


WOODLAND INVASIVE SPECIES

Common Buckthorn

Rhamnus cathartica

shrub/tree



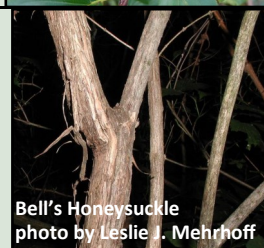
Native Look-Alikes:

Black Cherry

Choke Cherry

Amur, Morrow's and Bell's, and Tatarian Honeysuckle - shrub

Lonicera spp.



Native Look-Alikes:

Wild Honeysuckle (vine)

Mountain Fly Honeysuckle

Oriental Bittersweet

Celastrus orbiculatus

vine



Native Look-Alike:

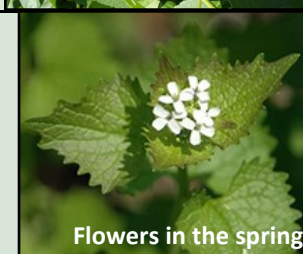
American Bittersweet
has fruit only at the end
of the vine



Garlic mustard

Alliaria petiolata

Forb ◦ 1-4 feet tall

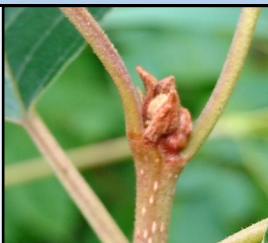


WETLAND INVASIVE SPECIES

Glossy Buckthorn

Frangula alnus

shrub/tree



Native Look-Alikes:

Speckled Alder

Winterberry

Purple Loosestrife

Lythrum salicaria

Forb ◦ 4-7 feet tall



Non- native Common Reed

Phragmites australis - australis

grass ◦ up to 15 feet tall



Native Look-Alike:

Native *Phragmites* with
smooth, often with red
stem and /or black
fungal spots, smaller

PRAIRIE AND OPEN SPACE INVASIVE SPECIES

Spotted Knapweed

Centaurea stoebe

Forb ◦ 2-4 feet tall



Canada Thistle

Cirsium arvense

Forb ◦ 2-5 feet tall



Native Look-Alikes:
Field Thistle
Flodman's Thistle
Swamp Thistle
Hill's Thistle

Leafy Spurge

Euphorbia esula

Forb ◦ 2-4 feet tall



Wild Parsnip

Pastinaca sativa

forb ◦ 4-6 feet tall



Native Look-Alike:
Golden Alexanders is
1-3 feet tall and has a
different leaf shape

Common Tansy

Tanacetum vulgare

Forb ◦ 3-4 feet tall



Crown Vetch

Securigera varia

Forb ◦ spreading 2-6 feet



Golden Creeper/
Manchu Tubergourd

Thladiantha dubia

vine



Minnesota Wildflowers ◦ www.minnesotawildflowers.info

Anoka Conservation District ◦ 763-434-2030 ◦ [www. AnokaSWCD.org](http://www.AnokaSWCD.org)

MN Department of Agriculture ◦ www.mda.state.mn.us/plants-insects/minnesota-noxious-weed-list