

# FAHERTY RESIDENCE



## Pre-Buffer Conditions

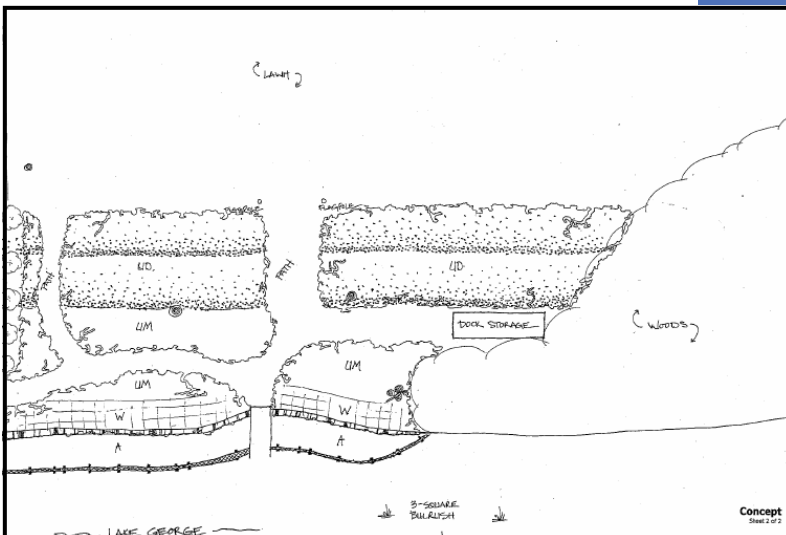
The Faherty property lies on the shore of Lake George. The plant community was dominated by mown turf grass, and reed canary grass—an invasive species. As a result, there was:

- Active shoreline erosion due to limited root structure to withstand wave action and animal activity
- Direct conveyance of nutrients and pollution from the property into the lake, increasing algae and unwanted aquatic vegetation blooms
- Limited plant diversity
- Limited wildlife habitat



## PROJECT SPECS

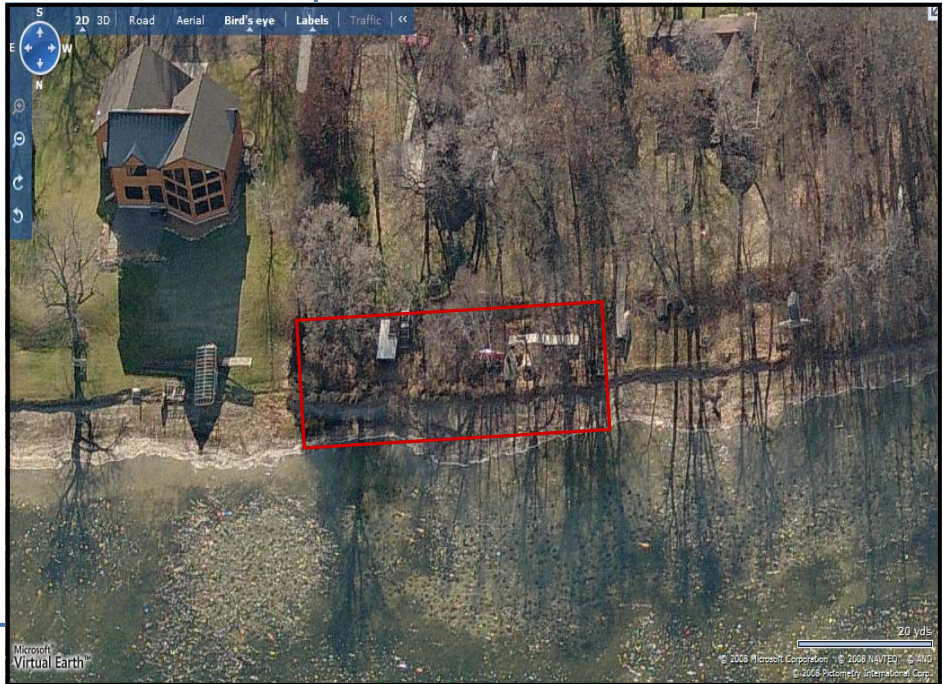
- Date Planted .....Summer 2003
- Buffer Length .....~70 ft
- Buffer Area..... ~3,800 ft<sup>2</sup>
- Natives Planted .....~850
- Cost Share Funding .....50% of project expenses up to \$2,000.00



## After Lakeshore Restoration

Mown turf and invasive plants are replaced with a variety of native plantings at the lake edge. Biologs were installed to buffer wave action and allow aquatic plants to establish. Approximately 850 native grasses, flowers, shrubs, and aquatic plants were planted. The native plantings combined with biologs and hardwood mulch provide many benefits, including;

- Storm water is slowed and retained as it flows toward the lake increasing infiltration and decreasing input of nutrients and pollutants into Lake George
- Plant diversity is dramatically increased and the increase in root structure protects the shoreline from erosion due to runoff and wave action
- Fish and wildlife habitat is dramatically increased



July 2003

