

PROJECT PROFILE

RIVER'S BEND CONSERVATION GROUP

Riverbank Stabilization



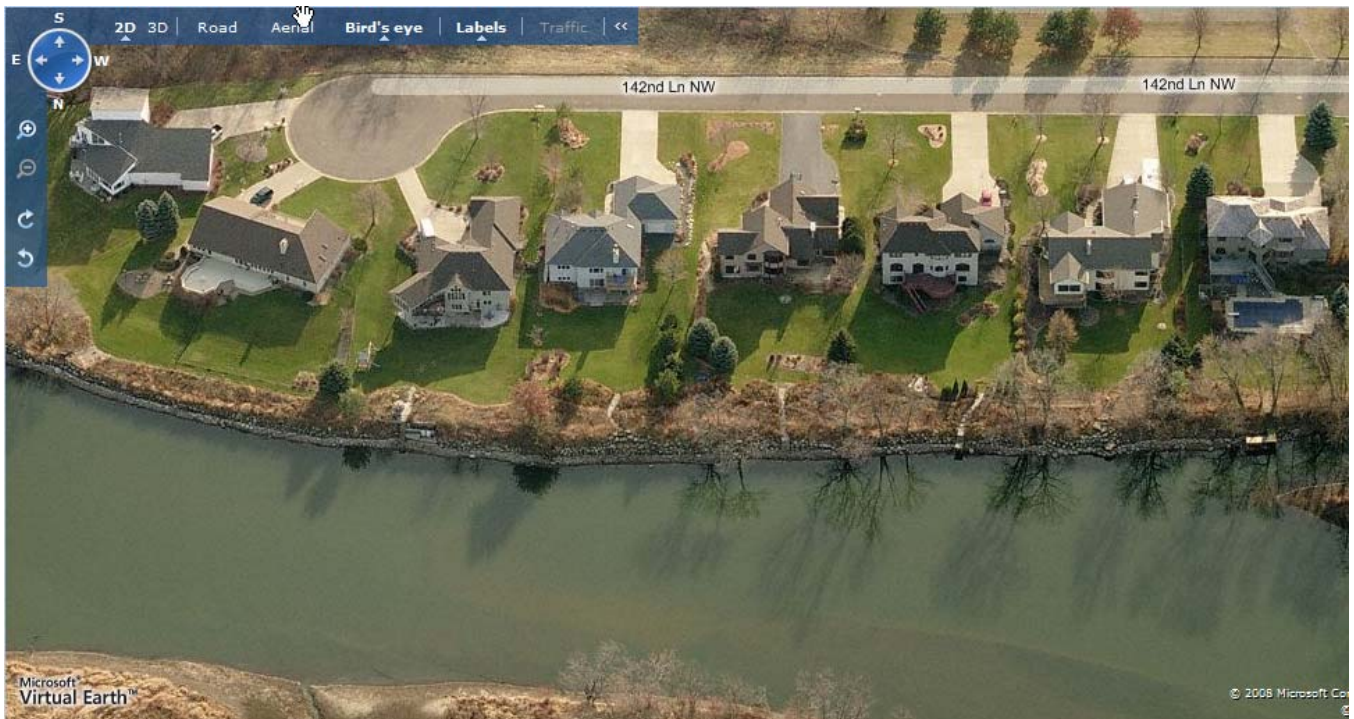
Pre-Stabilization Conditions

The River's Bend Conservation Group consists of eight single family properties working together to stabilize a section of eroding stream bank along the Rum River, which affected all of the properties. By working together, the property owners were able to accomplish a large project with great public benefit at a relatively lower cost than by working separately. In all, 800 feet of riverbank along the properties was eroding at a rate of 1 foot/year resulting in large input of sediment and nutrients into the Rum River. The group decided on a combination of bioengineering and riprap, which:

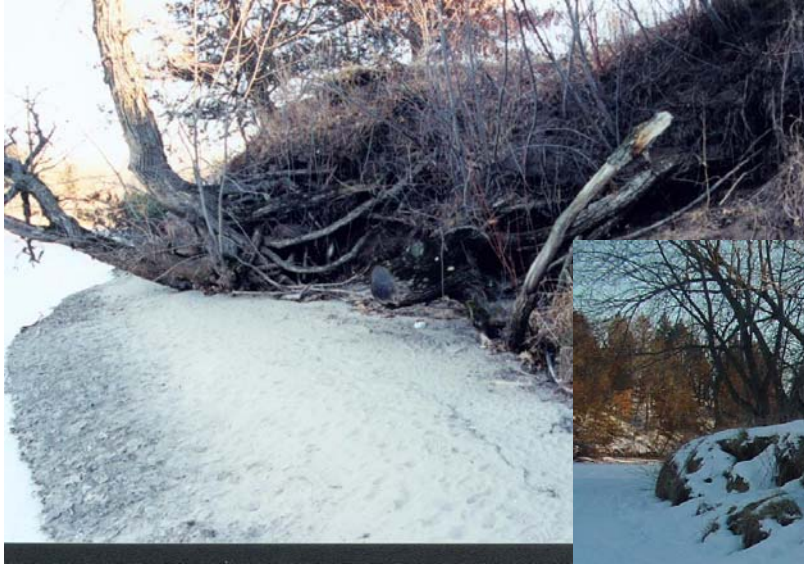
- Improved fish and wildlife habitat
- Provided aesthetic enhancements
- Provided a long-term solution to counter the high-risk of further bank erosion

PROJECT SPECS

Installed	2003
Project Length	785 ft
Buffer Width	25 ft
Natives Planted	~11,000 plugs
Cost-share Funding Provided ...	\$58,889.39
Cost-share sources.....	EPA 319 Grant, MEP Shoreline Grand, State Cost-share Grant



Before Installation



December 2002



Approximately 785 feet of shoreline along the eight properties was actively eroding at a rate of approximately 1 foot per year.

Installation



June 2003



The slope was re-graded and riprap was installed to protect the toe of the slope. Erosion control fabric and mulch were installed within a 25 foot wide buffer which was planted with native species.

After Installation



The bank was stabilized with riprap and a variety of native shrubs, trees, grasses, and flowers were planted within the buffer area following re-grading and installation of erosion control blankets. The use of diverse native plants increases wildlife habitat, increases bank stability by creating a dense root network, and is aesthetically appealing.

◀ September 2003

This picture shows the site after one full year of growth. The native buffer reduces erosion and nutrient input into the Rum River while tying in to the homeowners existing landscaping.

September 2004 ▶

