

RETZER RESIDENCE



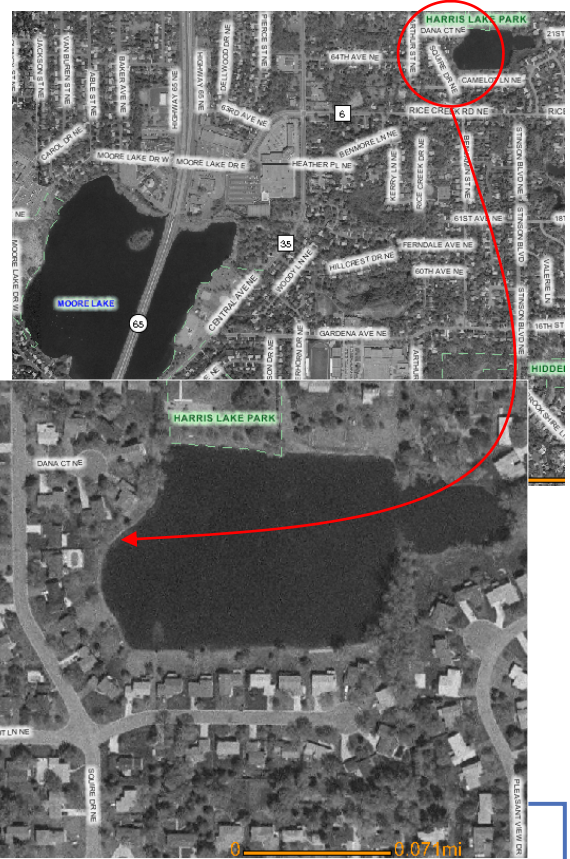
Pre-Buffer Conditions

Harris pond is predominantly maintained with mown turf down to the lake edge. This practice resulted in:

- Erosion of the lake edge due to loss of root structure to hold the soil together
- Over-population of Canada Geese and an abundance of goose feces
- Loss of plant diversity
- Loss of wildlife habitat



Harris Pond restoration site prior to buffer installation (July 2002)



The project is located along the west side of Harris Pond in Fridley. Please respect private property!



The small buffer area is outlined using marking paint. The existing turf was killed using an aquatic glyphosate (July 2002)

PROJECT SPECS

- Date PlantedAugust 2002
- Buffer Length20 ft
- Buffer Area.....160 ft²
- Natives Planted 162



ANOKA
CONSERVATION
DISTRICT



Installation

The site was prepared by eliminating the existing vegetation through application of glyphosate (e.g. Rodeo®). Erosion Control Blanket was staked to the edge to prevent soil loss. A 2" layer of shredded hardwood mulch was applied to the planting area. Aquatic, wet meadow, and upland plugs were planted at 12" spacing.

◀ August 2002

Site Monitoring

After planting was completed the site was fenced off with a vinyl coated wire fencing to keep out geese and other herbivores. This site didn't require any watering due to the minimal difference between the water elevation and planting elevation.

August 2002 ▶



Site Monitoring

After one year's growth the planting is doing very well. All of the plants flowered in the first year. The 12" spacing between plugs has resulted in a very full looking buffer in the first year. A very small amount of weeding and no watering were required on this site.

◀ July 2003

