

HAWKINSON & HEGGE LAKESHORE RESTORATION



Project Summary

A lakeshore restoration project was completed on the Hawkinson and Hegge property adjacent to Locke Lake in Fridley, MN. Neglect and unpermitted excavating by previous landowners had created a steep and unstable bank along the lakeshore. The yard had collapsed into the lake in several places and the shoreline was dominated by weedy species. The restoration project consisted of invasive species removal, grading, erosion control, and planting of native species to create a buffer zone. In addition, bioengineering techniques were used to repair and prevent erosion, improve the quality of runoff reaching Locke Lake, and create additional wild-life habitat.



Project Specs

Date Installed July 2010
Total Planting Area 1,100 ft²
Shoreline Stretch Restored 65 ft

Installation Funding

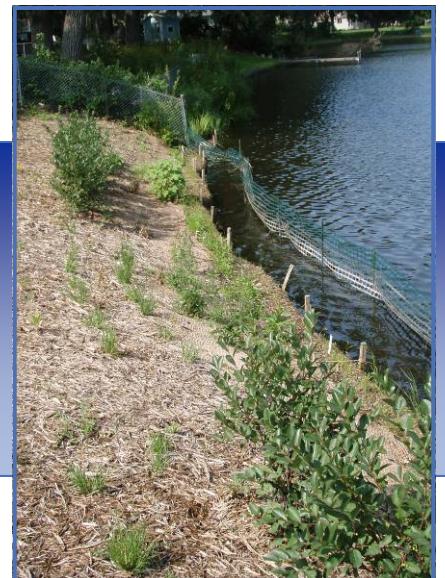
RCWD Cost-Share\$3,766.66
Landowner\$3,766.66
Total Installation Cost\$7,533.32



Previous conditions consisted of a lakeshore collapsing into Lock Lake and a plant community dominated by weedy species.



Bioengineering practices like this biolog provide water quality benefits, shoreline stability, and increased wild-life habitat.



The buffer area was planted with deep rooted vegetation consisting of native species to aid in filtration/ infiltration, stabilization, and wildlife habitat.