

PROJECT PROFILE
RUM RIVER CENTRAL PARK

**Riverbank
Stabilization**

Pre-Stabilization Conditions

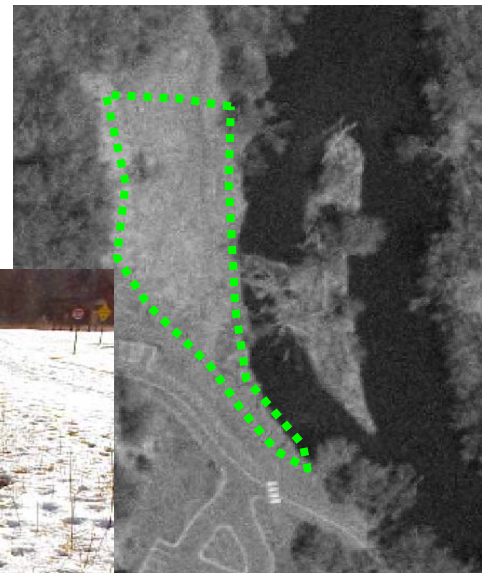
Anoka County Parks and Recreation Department staff first approached the Anoka Conservation District about correcting riverbank erosion in Rum River Central Regional park in 1999. ACD arranged for several funding sources to design and install the project. Three sites were stabilized, all of which are located within the park, which is located in the northeastern most corner of the City of Ramsey, at the intersection of Burns Township, and the cities of Oak Grove, Andover and Ramsey. The park consists of 460 acres of passive recreation including a network of paved and natural surface trails for walking, biking, and horseback riding. There is a canoe landing, several parking areas and a picnic shelter and playground in one portion of the park.



Site 1

Site 1 consisted of approximately 350 feet of eroding riverbank within ten feet of a bituminous trail and twenty feet of a road. A combination of submerged rock vanes, erosion fabric and a native plant buffer was selected to address the erosion problem.

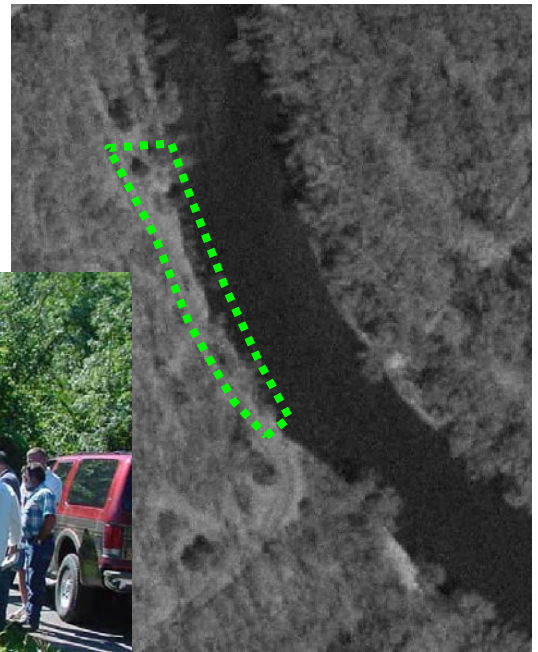
March 2002 ▶



Site 2

Site 2 consisted of approximately 200 feet of eroding riverbank within five feet of a bituminous trail. A combination of root wads, minimal rock, erosion fabric and a native plant buffer was selected to address the erosion problem.

July 2002 ▶



Site 3

Site 3 consisted of approximately 700 feet of eroding riverbank within twenty feet of a grass horse trail. A combination of root wads, submerged rock vanes, minimal toe reinforcement with rock, erosion fabric and a native plant buffer was selected to address the erosion problem.

March 2002 ▶



Installation



Looking upstream during bankfull.

Site 1

Two submerged rock vanes were installed and the site was graded. Following grading, one root wad was installed. CF7 erosion fabric was installed on the bank below bankfull and straw erosion blanket was installed above bank full. Areas below bankfull were planted with native plant plugs at 18 inch intervals while areas above bankfull were seeded with a native seed mix and planted with native plugs at 36 inch intervals.

◀ June 2003

Site 2

High water delayed grading and project installation at site 2. However, after grading occurred, root wads and minimal rock were installed along with erosion control fabric and a native buffer as described above for site 1.

August 2003 ▶



Site 3

Two submerged rock vanes were installed along with six root wads. After grading, erosion control fabric and native buffer were installed as described above for site 1.

◀ June 2003

