

Reference Wetlands



Description

Reference wetland groundwater monitoring was conducted with the purpose understanding wetland hydrology, including the impacts of climate and land use change. Reference wetlands are wetlands monitored to aid in understanding of water conditions in wetlands throughout the watershed. This data aids our understanding of surficial water table changes and trends, as well as in regulatory determinations and resolving water level disputes. Continuous electronic water level monitoring devices were installed by the ACD.

Locations

- See next page

Monitoring Schedule

1x 4 Hours
April to November
(ice-out conditions)

Parameters

- Continuous groundwater levels

Reference Wetlands

2025 Reference Wetland Summary



Below is a list of wetlands categorized by their watershed management organization or watershed district. Historical and current water levels for these reference wetlands can be viewed through [ACD's Online Database](#).

SRWMO	URRWMO	LRRWMO	RCWD	CCWD	MWMO
Carlos Avery	Alliant Tech	AEC	Lamprey	Bunker	
Carlos 181st	East Twin	Rum Central	Rice Creek	Bannochie	
Tamarack	Lake George	Itasca		Ilex	
	Cedar Creek			Pioneer Park	
	Viking Meadows			Sannerud	
				Camp Three	
SRWMO	Sunrise River Watershed Management Org.		RCWD	Rice Creek Watershed District	
URRWMO	Upper Rum River Watershed Management Org.		CCWD	Coon Creek Watershed District	
LRRWMO	Lower Rum River Watershed Management Org.		MWMO	Mississippi Watershed Management Org.	

2025 Reference Wetland Map

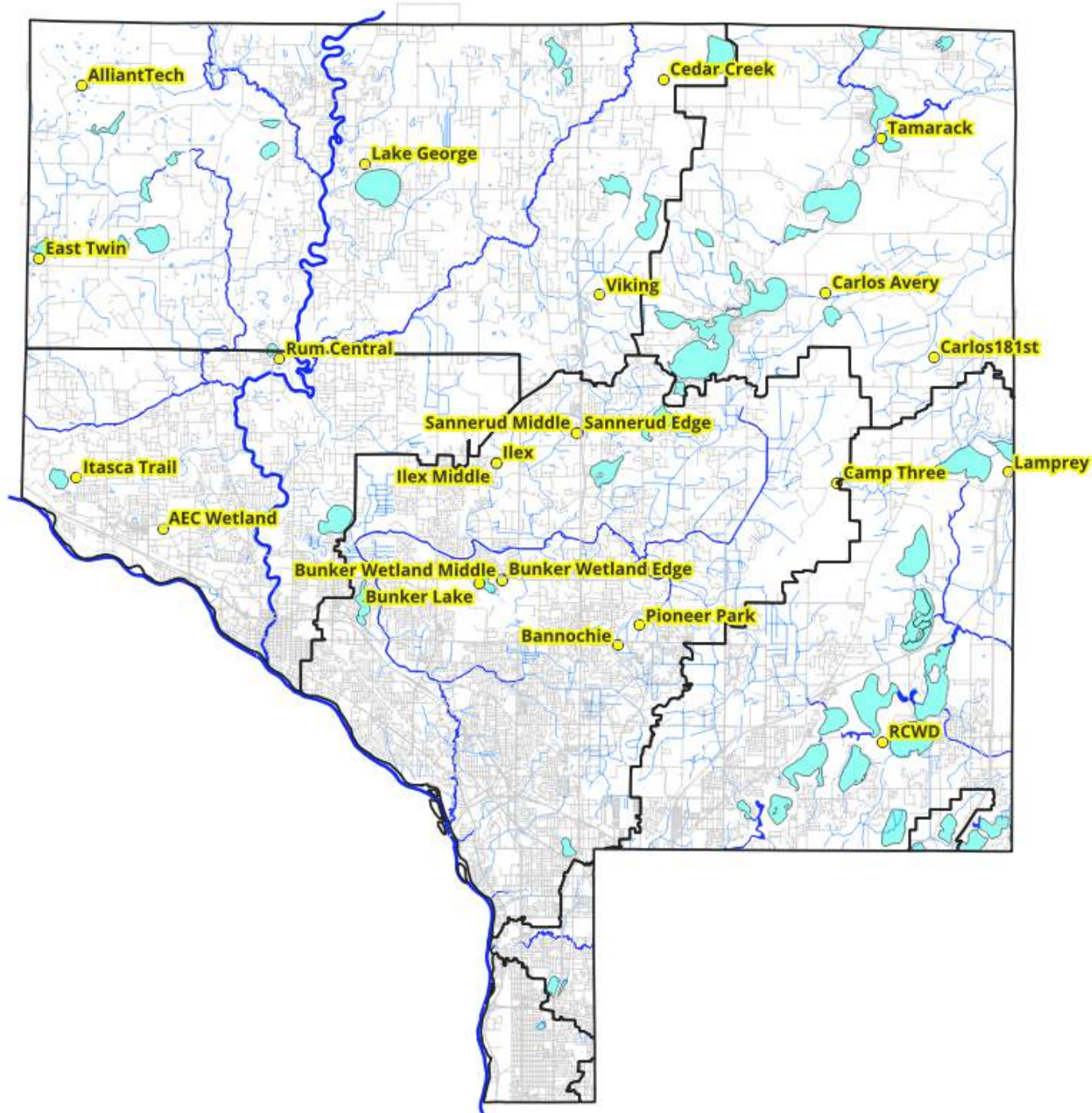
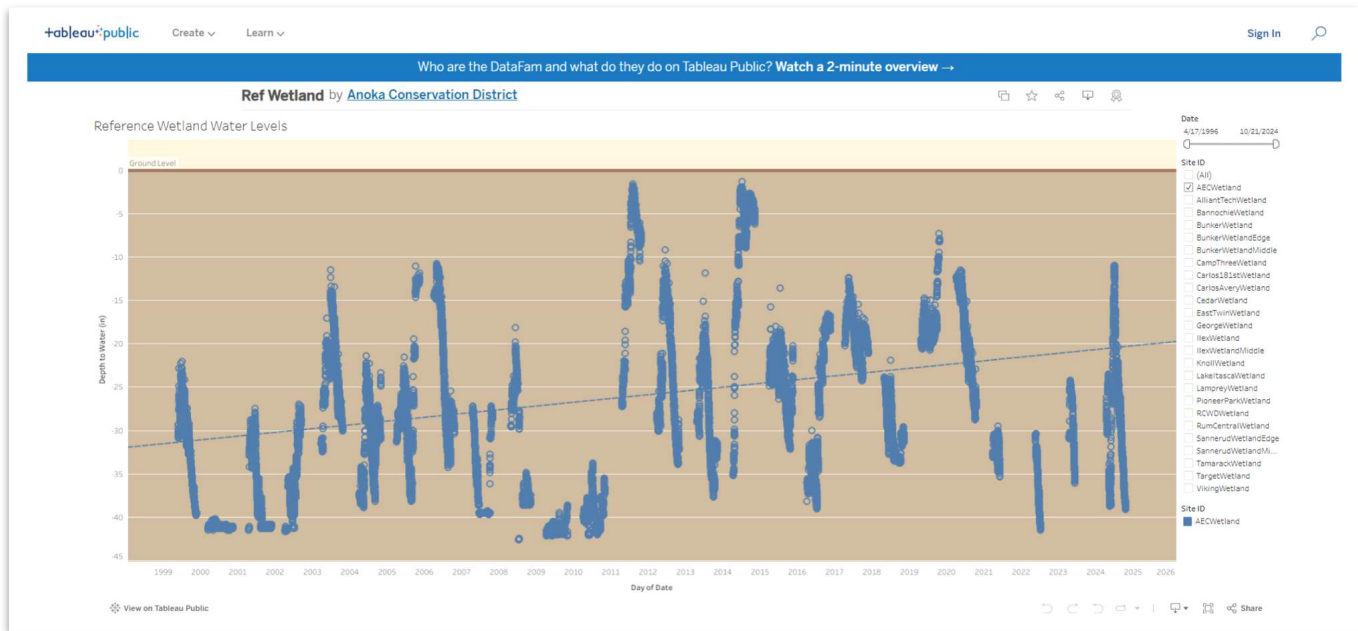


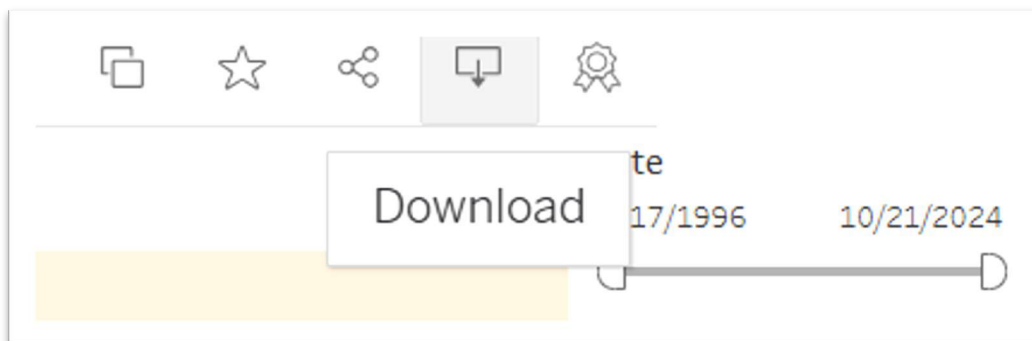
Tableau - How To View Data

ACD uses Tableau to visualize our reference wetland data. Historical and current water levels for can be viewed through [ACD's Online Database](#).



To view a specific dataset of a particular reference wetland, check its respective box on the right side of the graph. Additionally, the data can be filtered by a specific year or range of years using the slider on the top right of the graph.

Additionally, the full dataset or filtered portions of the dataset can be downloaded through Tableau. To download data, click the image shown below on the top ribbon of the graph.



Discussion

The reference wetland network in Anoka County continues to be a useful tool for wetland delineations and urban development regulations. Monitoring of several wetlands began in 1996 and more wetlands have been added to network over time for a total of 19 reference wetlands. Continued monitoring of these reference wetlands is essential for identifying water level trends, as well as to identify important current and historical water elevations necessary for wetland delineation.



Source: Wisconsin Watch, Feb. 2, 2023.

Additional water quality monitoring information can be found on ACD's Online Database:

<https://public.tableau.com/app/profile/anokaswcd/vizzes>

