

Cost Share Grant Guidelines

The Anoka Conservation District, in conjunction with partnering agencies, offers grants for projects that provide public benefits to water quality or improve habitat. Projects must be within Anoka County.

GENERAL GUIDELINES

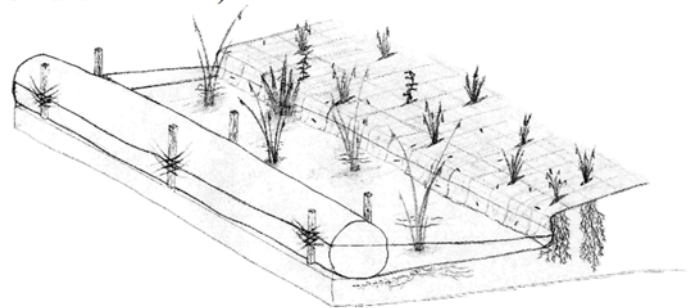
- Projects are reviewed by ACD staff and grant decisions are made by the ACD Board of Supervisors.
- Grants are reimbursement grants, unless otherwise approved in advance. Successful applicants must submit receipts for eligible expenses to the Anoka Conservation District. Reimbursement checks will be issued within four weeks.
- The ACD reserves full discretion to fund or not fund projects or portions of projects and to deviate from the following guidelines in order to ensure limited available funds are spent in a manner that achieves the greatest public benefit.
- Grants are available on a first come-first serve basis, are limited, and availability varies by watershed.
- Applicants may apply for other grant programs in addition to ACD grants, but the ACD will not provide grants such that total funding from public sources exceeds 75% of eligible project expenses.
- Grants will not be awarded for projects that are required, such as stormwater treatment required by local ordinances or repair/replacement of wetlands under the MN Wetland Conservation Act.
- Grants may be awarded for installation of native vegetation, pollinator habitat enhancement or other features within required vegetative buffers that exceeds minimum buffer requirements. In such cases, periodic mowing or grazing is not allowed except for the purpose of enhancing native vegetative growth.
- Eligible projects and grant amounts are on the following page.

ELIGIBLE EXPENSES:

Eligible expenses are those expenses that are eligible for grant reimbursement or, if provided by the landowner, count toward the landowner's required project contribution.

Materials

- Native plants and seed (those approved by the ACD and MN DNR)
- Erosion control blankets and biologs
- Wood mulch
- Landscaping fabric
- Stakes or anchors
- Herbicide
- Tool or machine rental
- Lawn edging
- Soil amendments
- Retaining wall block (rain gardens only)
- Drainage materials (rain gardens only)
- Rock, if deemed necessary by ACD
- Others as approved by the ACD Board of Supervisors



Labor

- Professional project design
- Professional services that require special skills or equipment not generally held by homeowners, as determined by the ACD Board. Examples include grading, concrete work, soil amendments, retaining wall construction, application of restricted use herbicides, controlled burning, mechanized

seeding or mowing large areas. Examples of ineligible labor that homeowners are expected to provide include planting, spreading mulch, and installing erosion control blankets.

- Others as approved by the ACD Board of Supervisors

Expenses incurred before the grant is approved are not eligible.

APPLICATION PROCESS:

Applications are accepted at any time, however funds are limited and awarded first-come, first-serve. To apply, complete the Anoka Conservation District's "Cost Share Grant Application." The grant recipient must enter into a contract with the ACD to maintain the project for not less than 5 years. Questions should be directed to Jamie Schurbon, Water Resource Specialist at 763-434-2030 or jamie.schurbon@anokaswcd.org

ASSISTANCE:

Anoka Conservation District staff are available to assist landowners with project advice, design, and cost estimation.

Cost Share Grants:

Eligible Projects and Grant Assistance

Project Type	Project Specifications	Grant Amount	Maximum Grant
<p>Shoreline Erosion Control and Native Vegetation Buffer</p>	<p>Restore native shoreline vegetation to lakes, streams, rivers, or ditches. The restoration must be 15 feet deep from the shoreline on average, and include aquatic plants. At least 50% of the plants must be native to this ecoregion. The project must also include measures to correct existing shoreline erosion and prevent future erosion. Preference is given to projects that correct active erosion.</p>	<p>70% of eligible expenses</p>	<p>\$900 per 1000 sq ft</p>
<p>Shoreline Erosion Control</p>	<p>These projects correct shoreline erosion on lakes, streams, or rivers through the use of soft engineering techniques such as natural-fiber erosion control materials, cedar tree revetments, brush bundles and/or native plants. These projects do not include a buffer of native vegetation that is >15 feet deep from the shoreline.</p> <p>Hard armament, such as rock, is not favored but may be funded if the ACD deems it necessary for site stabilization.</p>	<p>50% of eligible expenses</p>	
<p>Rain Gardens</p>	<p>Residential projects where stormwater runoff is directed into a central basin filled with native plants and appropriate underlying soils for infiltration. Preference is given to curb-cut rain gardens with drainages from streets and parking areas.</p>	<p>75% of eligible expenses for curb cut raingardens</p>	



Habitat Restoration and Management	Establishment or enhancement of native ecosystems . These projects are designed to create quality habitat in areas where it will be beneficial to wildlife. Examples include prairie plantings, pollinator gardens, invasive species removal or prescribed burning.	50% of eligible expenses	

These policies apply to local cost share grant funding only, not State Cost Share.