



**Anoka Conservation District**

*PROGRAM PROFILE:*

# *WILDLIFE CORRIDORS*

Since 1999 the Anoka Conservation District has initiated or been involved with seven wildlife corridor (greenway) planning projects encompassing Linwood Township, the City of East Bethel, the City of Lino Lakes, most of Columbus Township, the Cedar Creek Corridor in the City of Oak Grove, the City of Ramsey and Burns Township. The ACD has received over \$130,000 in state and local funding to conduct greenways work. The District assists local governments by conducting land cover inventory work and geographic information system analysis to identify wildlife corridors for incorporation into local comprehensive planning efforts. The ACD looks forward to working with other communities to develop a county-wide greenway system.



### **Land Cover Inventory:**

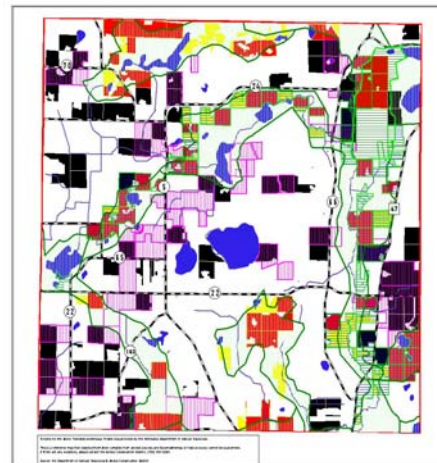
- All of Anoka County has been inventoried using the Minnesota Land Cover Classification System
- The ACD has placed a priority on communities having remaining high quality natural resources.
- Identification of remaining high quality habitat.

### **GIS Analysis:**

- 39 Greenway Corridors totaling 51,925 acres.
- 12 Greenway Hubs totaling 42,053 acres.
- Land use management plans for 6 communities.

### **Why Greenways:**

- Open space improves property values,
- Facilitates future trail corridors,
- Promotes community,
- Protects and improves water quality,
- Protects rare ecosystems,
- Improved wildlife habitat, and
- Ensures the long term viability of Anoka County's natural resources



**Burns Township Greenways Project**

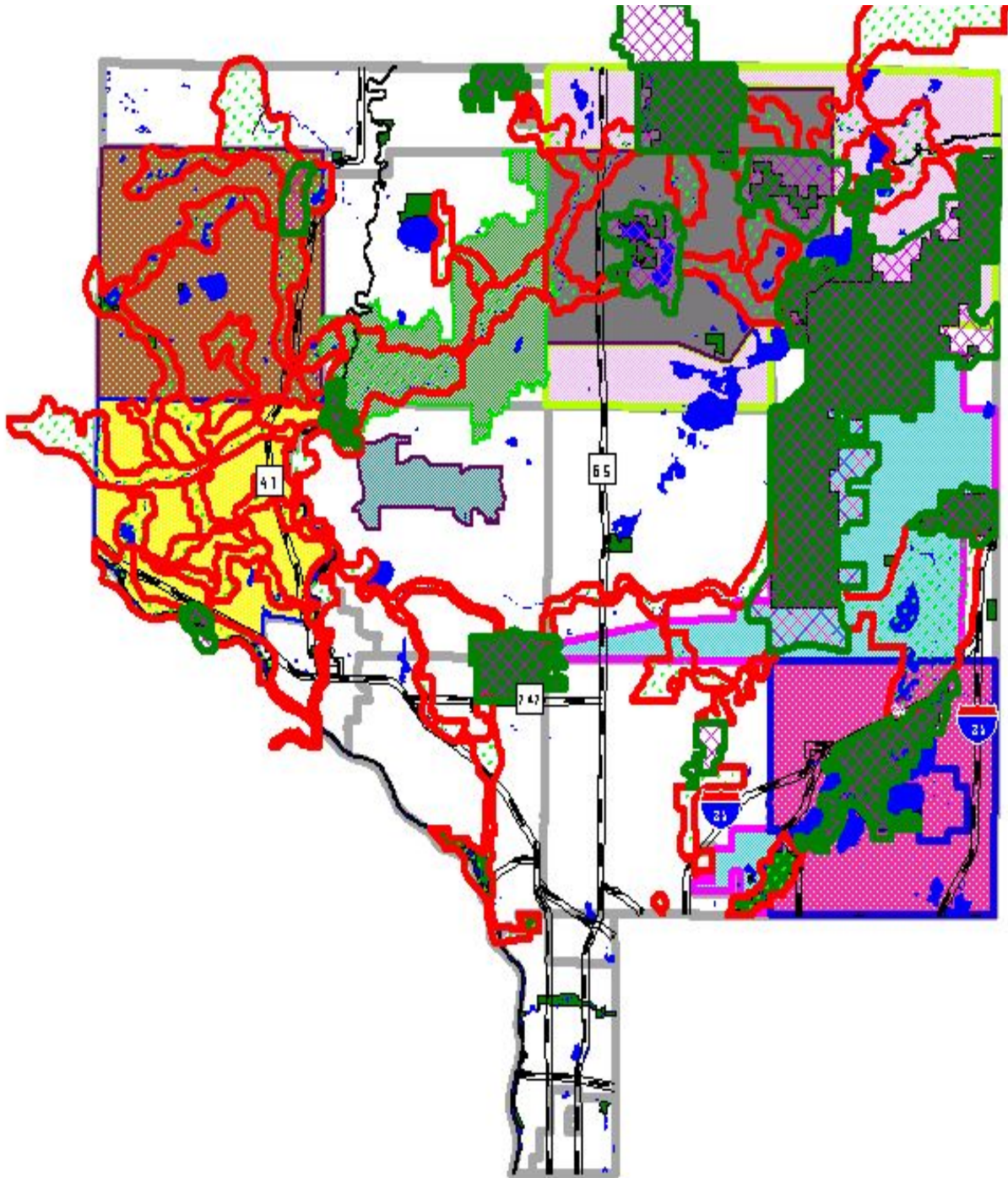
Greenways Implementation Opportunities

- Greenway Hubs
- Greenway Corridors
- TDR Served
- TDR Remaining
- Element/Rehabilitation
- Parklands
- Trail Parks
- Roads
- Lakes
- Streams

0 1 Miles

**Map 7**  
Anoka Conservation District

## Anoka County Greenways



Funding for Greenways Planning completed in Anoka County has been provided by the Minnesota Department of Natural Resources, Metro Greenways Program and the communities that have participated in greenway planning efforts.