



## Native Plants

## Dry Soils - Shade



Wild Columbine

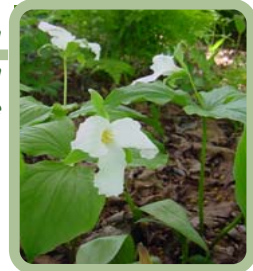
*Aquilegia canadensis*

Ht: 6"-30" Flower: Red or yellow Bloom: May-August  
Habitat: Full sun to shade. Dry to moist soils.  
Forest, savanna, forest edge or grassland.

Large White Trillium

*Trillium grandiflorum*

Ht: 6"-18" Flower: White Bloom: April-June  
Habitat: Full sun to shade. Moist to dry soils.  
Forest or forest edge.



Pennsylvania Sedge

*Carex pennsylvanica*

Ht: 4"-12" Flower: — Bloom: April-May  
Habitat: Full sun to full shade. Moist to dry soils.  
Forest, forest edge or grassland.

Wild Geranium

*Geranium maculatum*

Ht: 10"-24" Flower: Purple, white, pink Bloom: April-June  
Habitat: Full sun to shade. Moist to dry soils.  
Forest, forest edge or savanna.



False Solomon's Seal

*Smilacina racemosa*

Ht: 24"-36" Flower: White Bloom: May-July  
Habitat: Part sun to full shade. Moist to dry soils.  
Forest or forest edge.

White Snakeroot

*Ageratina altissima*

Ht: 12"-48" Flower: White Bloom: August-October  
Habitat: Full sun to full shade. Wet to dry soils.  
Woodland and Lake Edge.



American Black Currant

*Ribes americanum*

Ht: 1-3 ft. Flower: Yellow Bloom: Spring  
Habitat: Part sun to full shade. Moist to dry soils.  
Woodland and Forest.

American Hazelnut

*Corylus americana*

Ht: 6-12 ft. Flower: Brown Bloom: Spring  
Habitat: Part sun to full shade. Moist to dry soils.  
Forest or forest edge.



Red Oak

*Quercus rubra*

Ht: 60-80 ft. Flower: Brown Bloom: Spring  
Habitat: Full sun to part shade. Moist to dry soils.  
Forest.

Common Chokecherry

*Prunus virginiana*

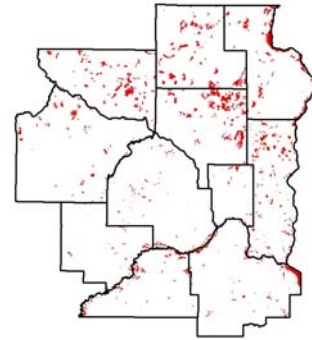
Ht: 10-20 ft. Flower: White Bloom: Spring  
Habitat: Part sun to shade. Moist to dry soils.  
Forest, forest edge or savanna.



## Native Plant Communities



Native plant communities  
(Early 1800's, pre-settlement)



Native plant communities  
(present)

The landscape around us once hosted a mosaic of plant communities: oak savanna, tall-grass prairie, wetlands, maple-basswood forests, etc. Extensive land development and introduced invasive species have led to the destruction of a majority of these native plant communities and a fragmentation of the few plant communities that remain. Of the 3,221,041 acres that comprise the eleven county metro area, native plant communities currently occupy approximately 3.8% (123,183 acres) of the total land area. Efforts should focus on restoring areas that re-connect and protect the remaining native plant communities.



## Native Plant Selection

Plants differ in their requirements for sunlight, moisture, and nutrients. Therefore, consider the factors below to select species that are well adapted to your site.

### Plant Requirements Influenced

	Sunlight	Moisture	Nutrients	Explanation
North/South Orientation	X	X		North facing slopes receive a lower amount and intensity of sunlight than south facing slopes.
Canopy Cover	X	X		Dense canopy cover creates shaded conditions, also influencing evaporation rates.
Slope		X		Steep slopes result in lower water retention.
Soil Type		X	X	Soil properties are important, influencing moisture retention and nutrient availability. Textures range from dry sands to rich loams to heavy clays, and even wet organics.
Water Availability		X		Increased soil moisture is common close to lakes, rivers, and wetlands, in depressions, and in areas with high water tables.

Site Properties

Consider the characteristics of plant species during your selection.

- Plant height
- Growth form (e.g. tree, shrub, grass, forb, vine, etc.)
- Bloom time and color
- Foliage color and texture
- Drought tolerance
- Flood tolerance
- Root depth and structure
- Wildlife value
- Growth rate
- Native/invasiveness

The Minnesota Department of Transportation provides an informational plant selection tool that allows you to query based on site conditions or desired plant characteristics (<http://dotapp7.dot.state.mn.us/plant/>).

## Metro Conservation Districts

Anoka Conservation District  
763-434-2030

Carver Soil & Water Conservation District  
952-466-5230

Chisago Soil & Water Conservation District  
651-674-2333

Dakota County Soil & Water Conservation District  
651-480-7777

Hennepin Conservation District  
612-348-9938

Isanti Conservation District  
763-689-3224

Ramsey Conservation District  
651-266-7270

Scott Soil and Water Conservation District  
952-492-5425

Sherburne Soil & Water Conservation District  
763-241-1170 Ext. 3

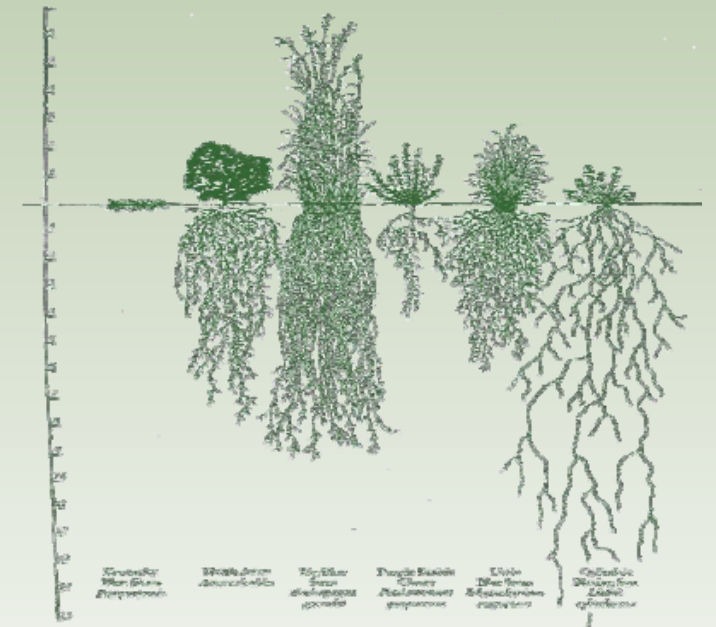
Washington Conservation District  
651-275-1136

Wright Soil and Water Conservation District  
763-682-1970



# NATIVE PLANTS

## Restoring Habitat in the Metro Area



## Metro Conservation Districts

A partnership between the eleven soil and water conservation districts of Anoka, Carver, Chisago, Dakota, Hennepin, Isanti, Ramsey, Scott, Sherburne, Washington and Wright Counties.

Prepared by the





Native Plants

Dry Soils - Sun



Pale Purple Coneflower  
*Echinacea angustifolia*  
Ht: 12"-48" Flower: Purple Bloom: July-August  
Habitat: Full sun. Dry soils.  
Grassland.

Little Bluestem  
*Schizachyrium scoparium*



Ht: 12"-30" Flower: White Bloom: August-September  
Habitat: Full sun to part shade. Moist to dry soils.  
Savanna, forest edge, and grassland.



Butterfly Milkweed  
*Asclepias tuberosa*  
Ht: 24"-36" Flower: Orange Bloom: June-September  
Habitat: Full to part sun. Dry to moist soils.  
Savanna, forest edge or grassland.

Prairie Dropseed  
*Sporobolus heterolepis*



Ht: 18"-48" Flower: Brown, pink, green  
Bloom: August-September  
Habitat: Full sun, dry to wet soils. Savanna or grassland.



Rough Blazingstar  
*Liatris aspera*  
Ht: 24"-36" Flower: Pink or purple Bloom: July-September  
Habitat: Full sun. Dry or moist soils.  
Grassland or savanna.

Black Eyed Susan  
*Rudbeckia hirta*



Ht: 12"-36" Flower: Yellow Bloom: July-October  
Habitat: Full to part sun. Dry soils.  
Savanna, forest edge, meadow, or grassland.



Red Raspberry  
*Rubus spp.*  
Ht: 6 ft. Flower: White Bloom: Spring-Summer  
Habitat: Full sun. Dry to wet soils.  
Forest, forest edge or Savanna.

Juneberry  
*Amelanchier spp.*



Ht: 10-20 ft. Flower: White Bloom: Spring  
Habitat: Full to part sun. Dry to wet soils.  
Forest, forest edge or Savanna.



Black Cherry  
*Prunus serotina*  
Ht: 70-100 ft. Flower: White Bloom: Spring  
Habitat: Full to part sun. Moist to wet soils.  
Forest, forest edge or Savanna.

Bur Oak  
*Quercus macrocarpa*



Ht: 60-100 ft. Flower: Yellow Bloom: Spring  
Habitat: Full sun, dry to wet soils.  
Forest or Savanna.



Native Plants

Moist to Wet Soils - Sun



Marsh Milkweed  
*Asclepias incarnata*  
Ht: 21"-48" Flower: Purple Bloom: June-August  
Habitat: Full sun to part shade. Moist to wet soils.  
Wet Meadow, marsh, wooded swamp or lake edge.

Prairie Cordgrass  
*Spartina pectinata*



Ht: 48"-120" Flower: Yellow Bloom: August-October  
Habitat: Full sun. Moist to wet soils.  
Wet Meadow, marsh, or grassland.



Boneset  
*Eupatorium perfoliatum*  
Ht: 36"-60" Flower: White Bloom: August-September  
Habitat: Full sun to part shade. Wet to moist soils.  
Wet Meadow, marsh, forest edge, savanna or Prairie.

Indian Grass  
*Sorghastrum nutans*



Ht: 36"-96" Flower: Yellow Bloom: August-September  
Habitat: Full sun. Moist to wet soils (some dry).  
Savanna or grassland.



Blue Flag Iris  
*Iris virginica*  
Ht: 18"-36" Flower: Blue Bloom: June-July  
Habitat: Full sun. Wet to moist soils.  
Wet Meadow or marsh.

Big Bluestem  
*Andropogon gerardii*



Ht: 36"-96" Flower: Purple Bloom: August-September  
Habitat: Full sun to part shade. Moist to wet soils.  
Savanna, forest edge or prairie.



Red Osier Dogwood  
*Cornus sericea*  
Ht: 6-12 ft. Flower: White Bloom: Spring  
Habitat: Full sun. Moist to wet soils.  
Wet meadow, wooded swamp, forest edge or grassland.

Nannyberry  
*Viburnum lentago*

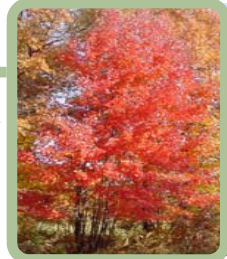


Ht: 15-18 ft. Flower: White Bloom: Spring  
Habitat: Full sun to shade. Moist to wet.  
Forest or savanna.



Paper Birch  
*Betula papyrifera*  
Ht: 50-70 ft. Flower: Yellow Bloom: Spring  
Habitat: Full sun to part shade. Moist to wet soils.  
Forest.

Red Maple  
*Acer rubrum*



Ht: 50-70 ft. Flower: Red Bloom: Spring  
Habitat: Full sun to part shade. Moist to wet soils.  
Forest.



Native Plants

Moist to Wet Soils - Shade



Marsh Marigold  
*Caltha palustris*  
Ht: 8"-16" Flower: Yellow Bloom: April-June  
Habitat: Part sun to shade. Wet soils.  
Wet Meadow, wooded swamp or marsh.

Wild Ginger  
*Asarum canadense*



Ht: 36" Flower: Green Bloom: May-June  
Habitat: Part sun to shade. Moist to wet soils.  
Wet Meadow and Lake Edge.



Jacobs Ladder  
*Polemonium caeruleum*  
Ht: 18"-24" Flower: Blue, white or orange Bloom: May-July  
Habitat: Part sun to full shade. Moist to wet soils.  
Forest or forest edge.

Cinnamon Fern  
*Osmunda cinnamomea*



Ht: 24"-63" Flower: Red/brown spores Bloom: July-October  
Habitat: Full sun to part shade. Moist to wet soils.  
Forest, wooded swamp, wet meadow.

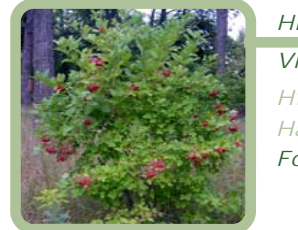


Bloodroot  
*Sanguinaria canadensis*  
Ht: 8"-10" Flower: White Bloom: April-June  
Habitat: Full sun to shade. Moist to wet soils.  
Forest, forest edge or savanna.

Jack-In-The-Pulpit  
*Arisaema triphyllum*



Ht: 12"-24" Flower: Purple or green Bloom: April-July  
Habitat: Part sun to shade. Moist to wet soils.  
Forest, forest edge or bog.



Highbush Cranberry  
*Viburnum trilobum*  
Ht: 8-12 ft. Flower: White Bloom: Spring  
Habitat: Full sun to shade. Moist to wet.  
Forest, marsh, wooded swamp.

American Elderberry  
*Sambucus canadensis*



Ht: 6-12 ft. Flower: White Bloom: Summer  
Habitat: Part sun to shade. Moist to wet soils.  
Forest, savanna, bog or grassland.



Basswood  
*Tilia americana*  
Ht: 60-130 ft. Flower: Yellow Bloom: Spring  
Habitat: Part sun to shade. Moist to wet soils.  
Forest.

White Pine  
*Pinus strobus*



Ht: 75-100 ft. Flower: Purple Bloom: Summer  
Habitat: Full sun to part shade. Dry to wet soils.  
Forest.