

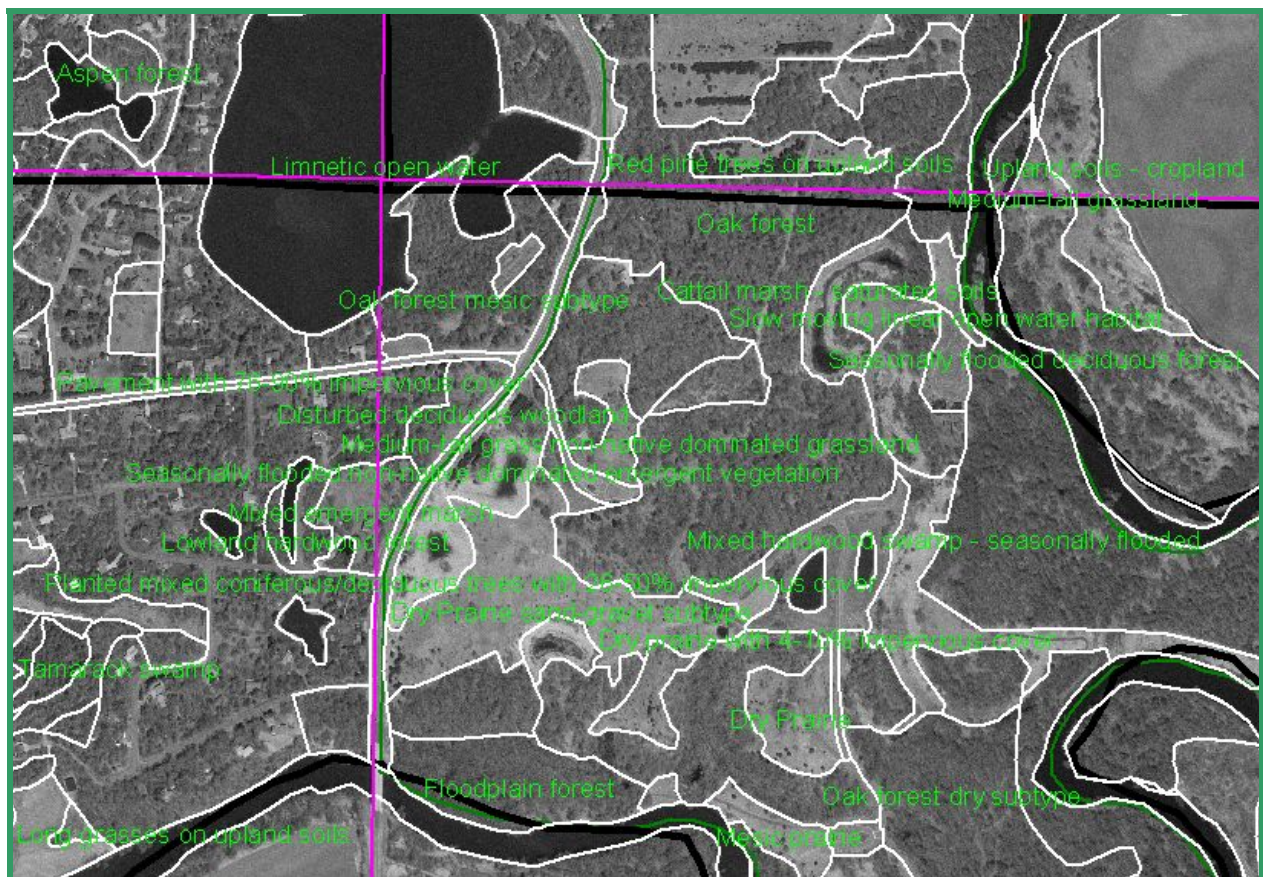


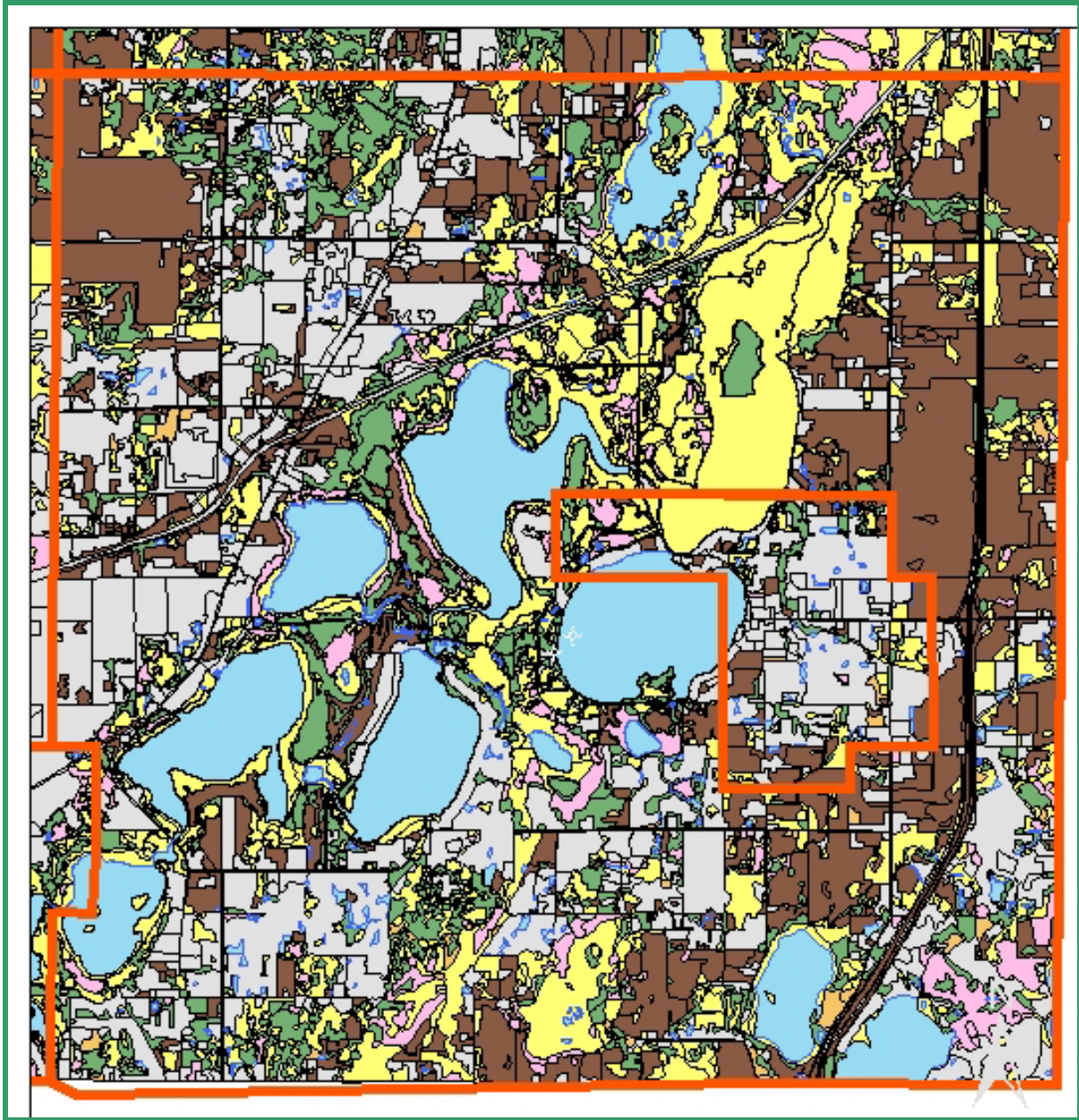
Anoka Conservation District

PROGRAM PROFILE:

# MINNESOTA LAND COVER CLASSIFICATION SYSTEM

Since 1999 the Anoka Conservation District in cooperation with the MN Department of Natural Resources Metro Greenways Program, the cities of East Bethel, Lino Lakes, Ramsey, Burns Township, Linwood Township, Anoka County Parks and Recreation, the Metropolitan Council, Coon Creek Watershed District and Rice Creek Watershed District. The data produced by these inventories will allow local communities to conduct more detail planning, resulting in a better end product, the future of our communities. The information is not just on natural resources, but on agriculture, housing developments, industry, transportation and many other types of land cover. Much of the data was recorded in the field, inaccessible areas were classified using a combination of aerial photos, infrared photos and data the ACD has, including wetland and soils maps. The data and GIS (Geographic Information System) software has improved the assistance ACD staff provide for local communities and individual landowners. We can use the information when developing municipal and county-wide open space plans and when reviewing proposed developments. If you are interested in how land cover on your property was classified you can check it out by using the mapping tool on the Anoka Natural Resources website.





This image of the City of Lino Lakes above shows general land cover types. The gray areas are built up, yellow is herbaceous, brown is planted vegetation, blue is water, green is forested and lavender is shrub land. This image shows the data at its rudimentary level, however the information can also be used to identify certain levels of impervious area throughout a geographic area. Looking at the map and knowing that green is forest and yellow is herbaceous, can you tell where Rice Creek Chain of Lakes Regional Park is?

Funding for the Minnesota Land Cover Classification System inventory in Anoka County was provided by the Minnesota Department of Natural Resources, Metro Greenways Program.