

# Groundwater Monitoring



## Description

The Minnesota Department of Natural Resources and the Anoka Conservation District are interested in understanding Minnesota's groundwater quantity and flow. These deep groundwater wells are not as sensitive to precipitation as other hydrologic systems such as wetland and streams, but rather respond to longer term trends. The MN DNR maintains a network of groundwater observation wells across the state.

ACD is contracted to take water level readings at 24 wells in Anoka County and to download continuous data-loggers quarterly, submitting the findings to the MN DNR. At most sites, the MN DNR has automated devices taking continuous water level readings. ACD still hand measures wells with data loggers periodically to ensure accuracy. The MN DNR incorporates these data into statewide and national databases that aid in groundwater mapping. Raw data as well as continuous data from wells with data loggers installed are available for download on their website.

<https://www.dnr.state.mn.us/waters/cgm/index.html>

### Locations

- See next page

### Monitoring Schedule

Once per quarter

### Parameters

- Continuous ground-water levels
- Field measurements



# Groundwater Monitoring

## 2023 Observation Well Summary

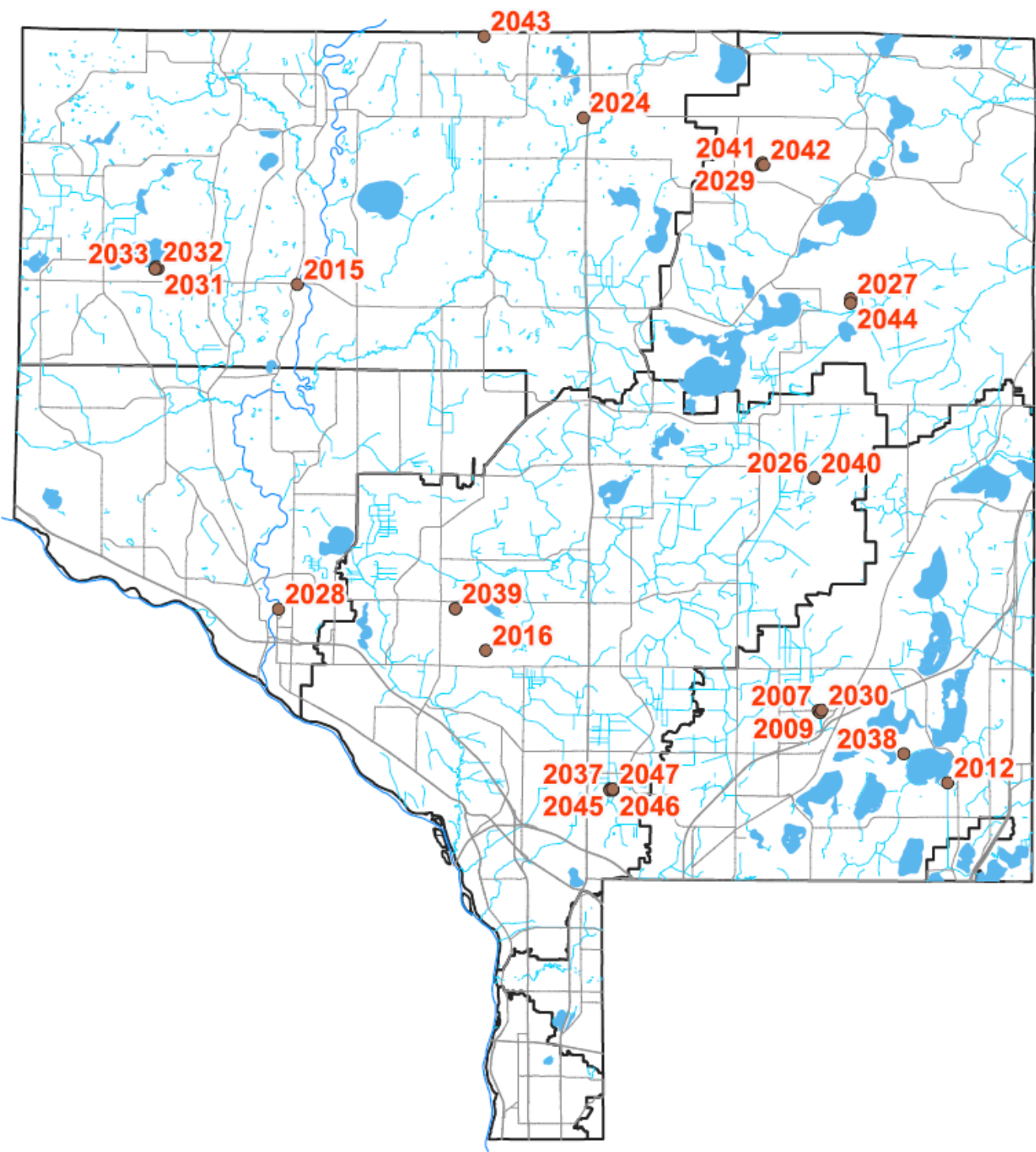
### DNR Groundwater Observation Wells

Below is the list Minnesota DNR groundwater observation wells in Anoka County that were monitored in 2024. The links to the MN DNR Cooperative Groundwater Monitoring program will provide additional details of that particular observation well.

MDH Unique #	Obwell ID #	Name	Well Depth	Aquifer Type
<a href="#">208137</a>	2007	QBAA at Lino Lakes, USGS Lino Lakes #1	270	Buried Artesian
<a href="#">208135</a>	2009	QBAA at Lino Lakes, USGS Lino Lakes #3	125	Buried Artesian
<a href="#">208573</a>	2012	CJDN at Centerville, USGS Centerville #2	268	Bedrock
<a href="#">243178</a>	2026	QBAA at Columbus, Carlos Avery #4	150	Buried Artesian
<a href="#">243000</a>	2027	CTCG at Columbus, Carlos Avery Old Shop Well	333	Bedrock
<a href="#">209297</a>	2028	CMTS at Anoka, Anoka Regional Treatment Center #4	510	Bedrock
<a href="#">114319</a>	2029	CTCG at East Bethel, Gordie Mikkelson WMA	221	Bedrock
<a href="#">272110</a>	2030	QWTA at Lino Lakes, Lino Lakes #5	15	Water Table
<a href="#">779942</a>	2031	CMTS at Nowthen, Pickerel Lake Deep	410	Bedrock
<a href="#">779941</a>	2032	CWOC at Nowthen, Pickerel Lake Shallow	195	Bedrock
<a href="#">708371</a>	2033	QWTA at Nowthen, Pickerel Lake WT	20.8	Water Table
<a href="#">785556</a>	2036	CMTS at Andover, Bunker Hills Park CMTS	494	Bedrock
<a href="#">689997</a>	2037	QWTA at Blaine, Blaine Public Works WT	17.7	Water Table
<a href="#">785579</a>	2038	CMTS at Lino Lakes, Rice Creek Park CMTS	810	Bedrock
<a href="#">783242</a>	2039	QWTA at Andover, Bunker Hills Park QWTA	27.5	Water Table
<a href="#">789993</a>	2040	QWTA at Columbus, MPCA AGW-150	13	Water Table
<a href="#">817621</a>	2041	CWOC at East Bethel, Gordie Mikkelson WMA	340	Bedrock
<a href="#">816912</a>	2042	QWTA at East Bethel Gordie Mikkelson WMA	33.1	Water Table
<a href="#">786974</a>	2043	QWTA at Bethel, Bethel WMA Well	14.5	Water Table
<a href="#">786975</a>	2044	QWTA at Columbus, MPCA Carlos Avery Old Shop	18	Water Table
<a href="#">854568</a>	2045	CWOC at Blaine, Blaine Public Works	430	Bedrock
<a href="#">854569</a>	2046	CTCG at Blaine, Blaine Public Works	290	Bedrock
<a href="#">870217</a>	2047	QBAA at Blaine, Blaine Public Works QBAA Replacement	223	Buried Artesian
<a href="#">867069</a>	2048	QBAA at Andover, Bunker Hills Park QBAA	143	Buried Artesian

# DNR Groundwater Observation Wells Map

Below is a map of the Minnesota DNR groundwater observation wells in Anoka County that were monitored in 2024.



# Cooperative Groundwater Monitoring - How To View Data

MN DNR’s [Cooperative Groundwater Monitoring](#) (CGM) program collects static groundwater-level data to assess groundwater resources, determine long term trends, interpret impacts of pumping and climate, plan for water conservation, and evaluate water conflicts.

Information for a site specific groundwater observation well can be found using the [CGM Application](#). Switch between “Map View” or “List View” to select the obwell, or filter using the Site Search function. Use the Action items to view site details, view location on map, or download site data.

DEPARTMENT OF NATURAL RESOURCES

RECREATION

DESTINATIONS

NATURE

EDUCATION & SAFETY

LICENSES, PERMITS & REGULATIONS

EVENTS & SEASONS

ABOUT DNR

Search for...

Home > Ecological and Water Resources > Groundwater

Cooperative Groundwater Monitoring (CGM)

Map View

Table View

Feedback

Filters

Reset

Show 10 entries

Site Search

MDH Unique #	DNR Obwell #	Read Status	Name	Action
101041	66015	actively read	CJDN at Faribault, ST. LAWRENCE CEMETERY	<div><div></div><div></div><div></div></div>
101062	19046	not actively read	OPCJ nr Hampton, EUGENE DOHMEN	<div><div></div><div></div><div></div></div>
102009		actively read	QWTA at Luverne, W20A 1964-0642	<div><div></div><div></div><div></div></div>
103452	24003	sealed	DCVA at Albert Lea, FREEBORN COURTHOUSE	<div><div></div><div></div><div></div></div>
103938	56040	not actively read	QBAA nr Ottertail, DELMER NAMES	<div><div></div><div></div><div></div></div>
104319	19018	not actively read	QBAA nr Hastings, JIM HUNEKE	<div><div></div><div></div><div></div></div>
105381	27042	not actively read	CJDN at Maple Grove, LAKE, CLIFF	<div><div></div><div></div><div></div></div>
105565	47003	actively read	QBAA nr Litchfield, GARY&CARMEN FLOWERS	<div><div></div><div></div><div></div></div>
105585	83010	not actively read	KRET nr La Salle, AL GUYER	<div><div></div><div></div><div></div></div>
105666		actively read	QBAA nr Red Lake Falls, 1977-1760 Crookston W Ob Well	<div><div></div><div></div><div></div></div>

Showing 1 to 10 of 3,085 entries

Previous

1

2

3

4

5

...

309

Next

Hydrograph

Help

Feedback

Displayed range

1971-01-04

to

2024-11-22

Reset

Provisional - Water Level

Approved - Water Level

Field Measurement - Water Level

Elevation (feet above sea level)

1975

1980

1986

1991

1997

2002

2008

2013

2019

2024

1978

1986

1994

2002

2011

2019



## Discussion

In 2024 parts of Anoka County experienced drought conditions. These drought conditions have an affect on the groundwater level, as illustrated in the majority of the Minnesota DNR's groundwater hydrographs in Anoka County. Groundwater is arguably the most critical natural resource in Anoka County — 94% of Anoka County residents drink groundwater, either from private wells or municipal water supplies drawn from groundwater. Droughts that led to record low water levels in Anoka County compromise water supply, recreation, and habitat. It is important to remember that although groundwater is out of sight, it should not be out mind.



Additional water quality monitoring information can be found on the Anoka Conservation District Water Almanac :

<https://www.anokaswcd.org/water-almanac.html>

